

MONTHLY MEMBERSHIP PROGRESS REPORT

District 324A3

Results as of: 3/31/2020

GMT:

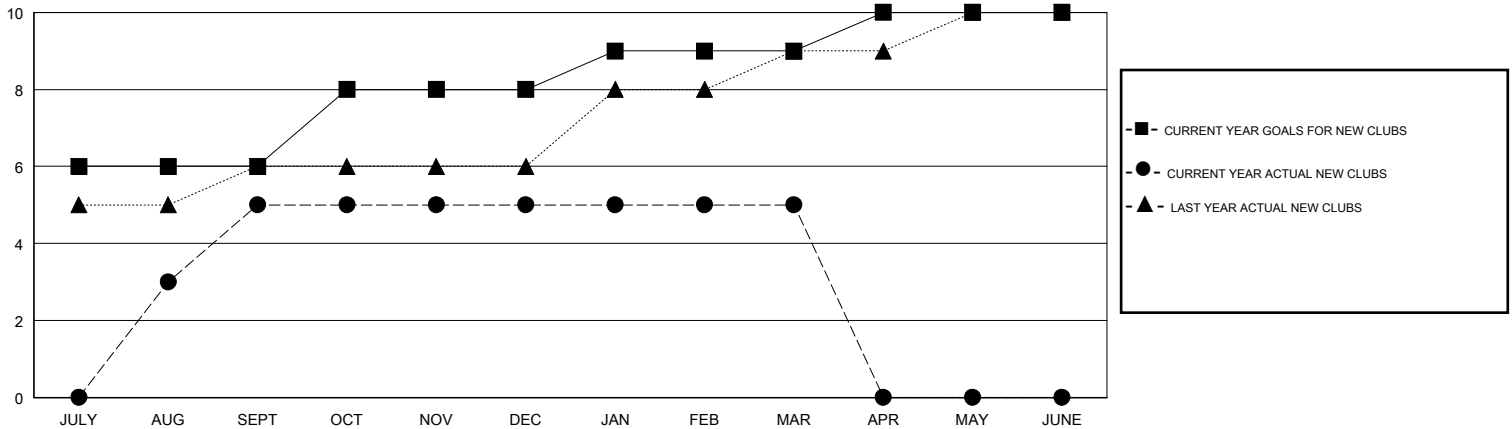
LOCATION INDIA

GMT CA

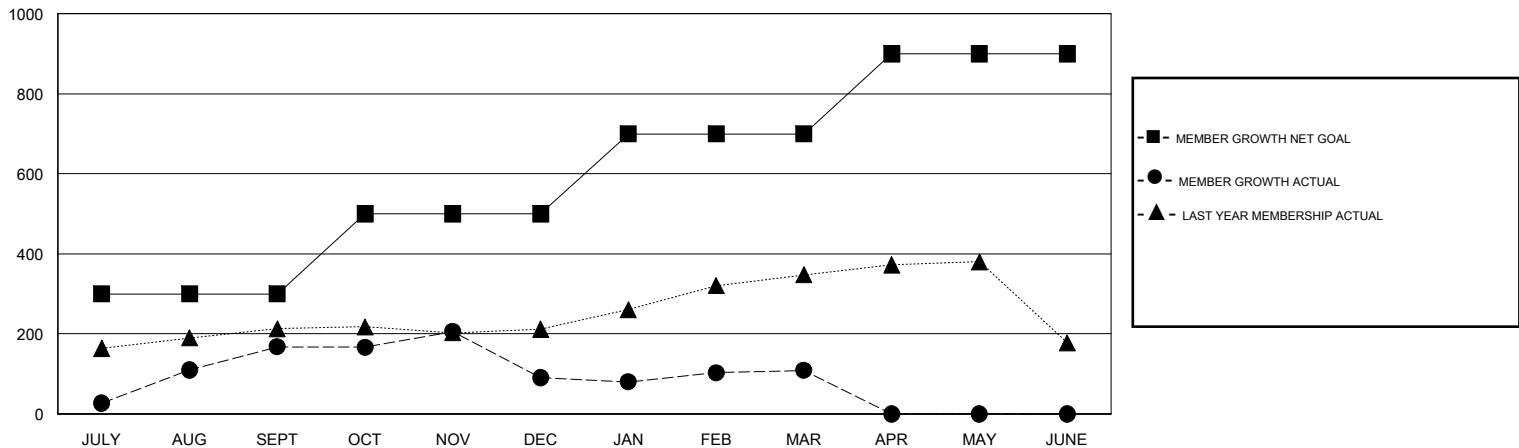
| Clubs | | | |
|-----------------------|---------------|-----------|---------------|
| RESULTS FOR 2019-2020 | | | |
| QUARTER | NEW CLUB GOAL | NEW CLUBS | DROPPED CLUBS |
| JULY/AUG/SEPT | 6 | 5 | 0 |
| OCT/NOV/DEC | 2 | 0 | 4 |
| JAN/FEB/MAR | 1 | 0 | 1 |
| APR/MAY/JUNE | 1 | 0 | 0 |

| Members | | | |
|-----------------------|------------------------|----------------------|--|
| RESULTS FOR 2019-2020 | | | |
| QUARTER | MEMBER GROWTH NET GOAL | MEMBER GROWTH ACTUAL | DROPPED MEMBERS ACTUAL (including transfers) |
| JULY/AUG/SEPT | 300 | 233 | 58 |
| OCT/NOV/DEC | 200 | 88 | 162 |
| JAN/FEB/MAR | 200 | 62 | 36 |
| APR/MAY/JUNE | 200 | 0 | 0 |

GOALS AND ACTUAL NEW CLUBS CUMULATIVE



GOALS AND ACTUAL MEMBERS CUMULATIVE



| | | |
|---|---|--|
| DROPPED CLUBS: 5 | 65 CLUBS OF 103 ADDED 1 OR MORE NEW MEMBERS | GENDER DISTRIBUTION MALE 3,131 (87.60%) FEMALE 443 (12.40%) |
| DROPPED MEMBERS DECEASED 9 CLUB CANCELLED 83 OTHER 164 <hr/> TOTAL 256 | CLICK HERE FOR CUMULATIVE MEMBERSHIP DATA | TOTAL FAMILY UNIT MEMBERS 994 FAMILY MEMBERS PAYING HALF DUES 581 |